

## The breathing system

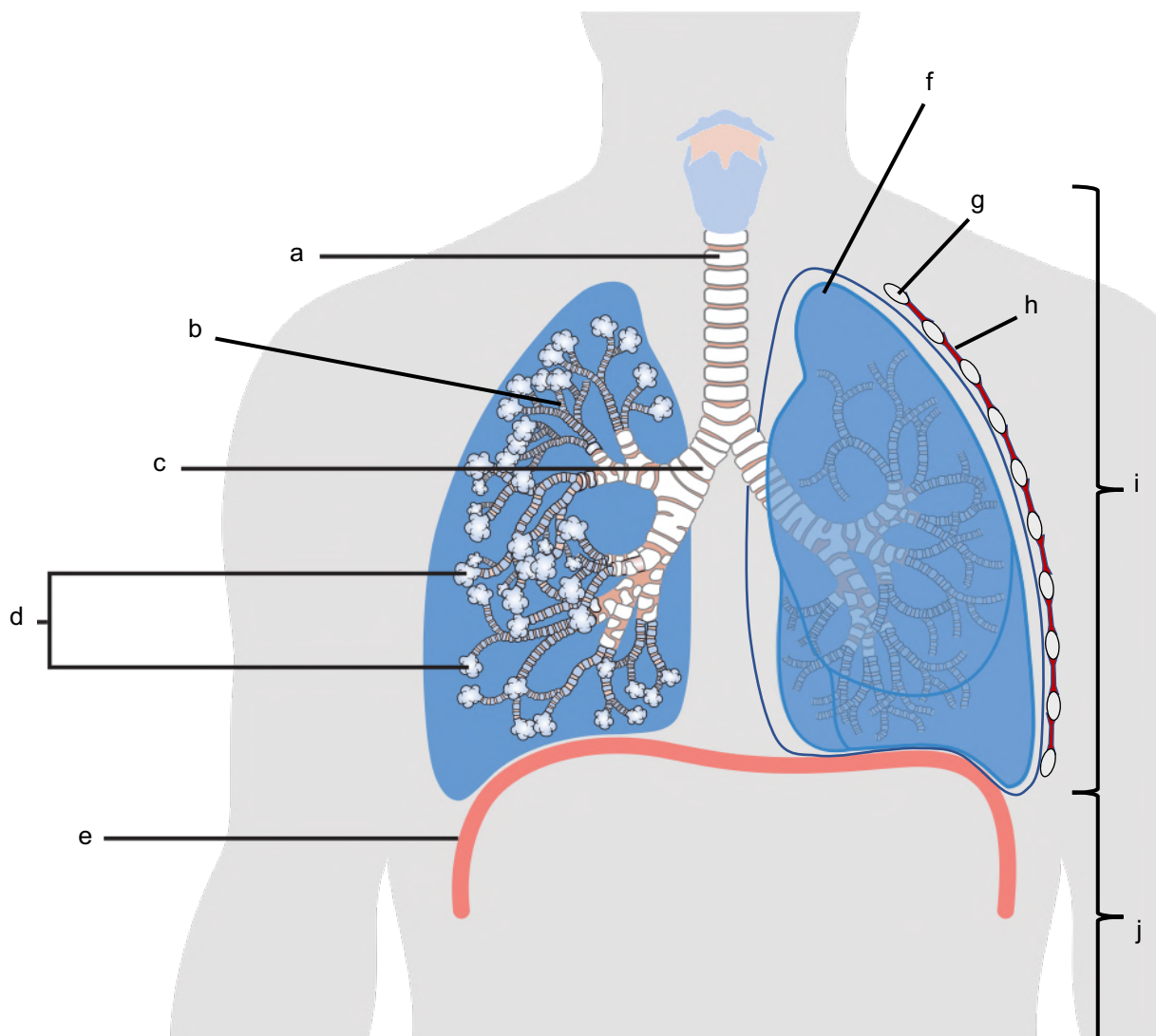
Humans are **multicellular** and contain many different types of **cells**. A group of the same cells forms a **tissue**. Different tissues work together in **organs**. Organs work together in **organ systems**.

The **lungs** are organs in the **breathing system** (or **respiratory** or **gas exchange system**). Its function is to get oxygen into the blood and remove carbon dioxide (a process called gas exchange).

COVID-19 is a disease caused by a tiny particle, called a virus. Viruses cause problems when they get into cells. If the COVID-19 virus gets into the cells in the tubes leading to the lungs, it causes a mild disease (a bit like flu). If it infects cells deeper in the lungs, it can cause a very serious disease.

### Find out

1. The diagram shows the breathing system. Parts (a), (f), (g) and (h) are all organs. Find out the names of all the parts. Write your answers in the table on the next page.



	Name of part		Name of part
a		f	
b		g	
c		h	
d		i	thorax (chest)
e		j	abdomen

2. a Find the name of the *type* of virus that causes COVID-19. \_\_\_\_\_
- b Find the name of the virus that causes COVID-19. \_\_\_\_\_

### **Test yourself**

3. List the names of three organs in the breathing system. \_\_\_\_\_
- \_\_\_\_\_

4. State the organ that is infected in mild forms of COVID-19. \_\_\_\_\_

5. Give another name for the breathing system. \_\_\_\_\_

6. Complete the gaps.

The lung is an organ because it contains different \_\_\_\_\_.

Each different tissue is made of a different type of \_\_\_\_\_. When organs work together, they form an \_\_\_\_\_.

7. Describe what happens in gas exchange. \_\_\_\_\_
- \_\_\_\_\_

### **Check-up**

- I. Check your answers.
- II. Prepare a short talk about a difference between people who have a mild form of COVID-19 and people who have the serious disease.